

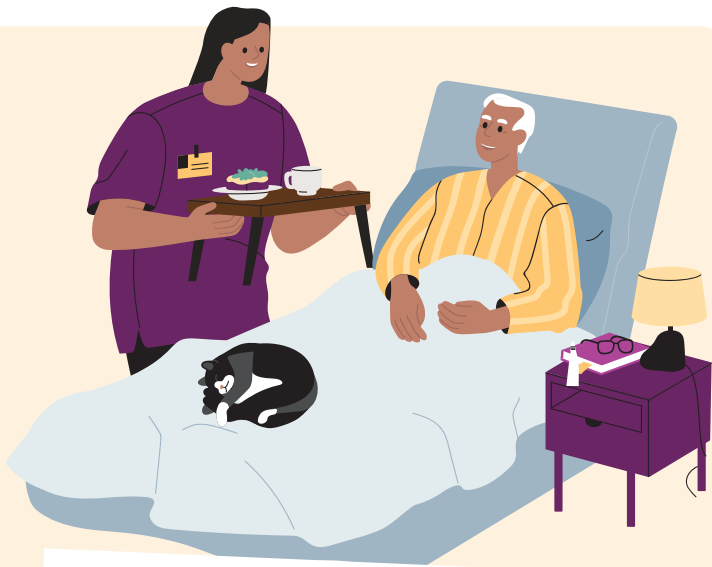
# RESPITE REQUEST

## What is Respite?

Temporary residential care to support the client and provide relief for the caregiver and/or family.

## Respite Options

- Mild Loss of Autonomy (RI/RPA)
  - Pavillon Montfort in MTL (Private)
  - Some CHSLD in Montreal.
- Advanced Loss of Autonomy
  - Some CHSLD in Montreal (St-Georges & Maimonides)
  - Chisasibi Hospital



### Required Documents Checklist

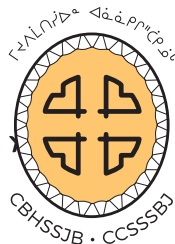
- Pre-admission form
- Client summary (for Chisasibi and Private)
- "Medical transfer summary temporary residential care" (for Montreal)
- List of medications
- Level of care

Let's get ready...  
so they can be comfortable  
(when they arrive)



## How to Reach Us

- Reach out to the social services of your local CMC or case manager.



Δἱΰρι·Δῆ...ἰ Γ·ἰῖῖ  
ἄῖἰἰ·Δῆ... ἠ Γῖῖῖ

# IYASKIWÎTÂU ADMISSION

## Regional Support for Long-Term Care (LTC) and Respite



# Who is Iyaskiwitau Admission?

## Who We Are

An advisory team working together to find safe and suitable homes for elders and adults with a loss of autonomy.

## Mandate

- 1 Centralize and standardize all requests for Long-Term Care (LTC) and Respite.
- 2 Help communities find the best possible services for their population in need.

## Benefits of Collaboration

Ensures equity in requests (wait time). Provides a concise summary (biopsychosocial and medical) of the client profile to resources. Ensures the involvement of a case manager for each client.

## Your Role as Local Case Manager

- 1 **INITIATE**  
Start the discussion about LTC/Respite as soon as a safety risk is noticed. This must involve the client and their family and/or caregiver(s).
- 2 **DOCUMENTATION**  
Complete all necessary application documents in partnership with family members.
- 3 **COORDINATION**  
When a bed is available, notify the person/family and work with the resource to organize the transfer (including belongings like wheelchairs, medication, etc.).
- 4 **SUPPORT**  
Stay involved with the client and family, helping to arrange visits (e.g., 3 to 4 visits a year paid by the CBH).



# LONG-TERM CARE (LTC) REQUEST



## When to Send a Request

When your client is no longer safe at home because:

- The person needs more care than is available from home care.
- The caregiver is exhausted or no longer able to provide care.
- The person cannot live alone due to loss of autonomy.

Don't wait until the situation is critical, as wait times for placement can be long (often a year or more). Start the discussion early.

Clientele — Elders and others with either a major or mild loss of autonomy.

## Available Long-Term Care Options

### Major lost of autonomy (CHSLD) TYPE

- Chisasibi Elder's home
- Chibougamau Boreal
- Abitibi Temiscamingue area
- Montreal area
- Gatineau
- Saguenay- Lac-Saint-Jean

### Mild lost of autonomy (INTERMEDIATE RESOURCE) TYPE

- Mistissini Elder's home
- Chibougamau area
- Montreal area
- Gatineau
- Saguenay- Lac-Saint-Jean
- Private resource (Pavillon Montfort/Montreal)

### Required Documents Checklist

- #### Long-Term Care Request (LTC)
- Release of information to Iyaskiwitau
  - Admission request long term care adult
  - Consent form
  - MCAT (in French for Val d'Or)
  - Medication list
  - Past medical history/medical summary/Level of care
  - Behavioural grid (if client has behavior issues/PRN)
- #### LTC Regional Forms (Conditional)
- Montreal — Montreal long term care request form.
  - Val-d'Or/Abitibi — Abitibi histoire de vie, Abitibi long term care request form (if client current location is at home).