

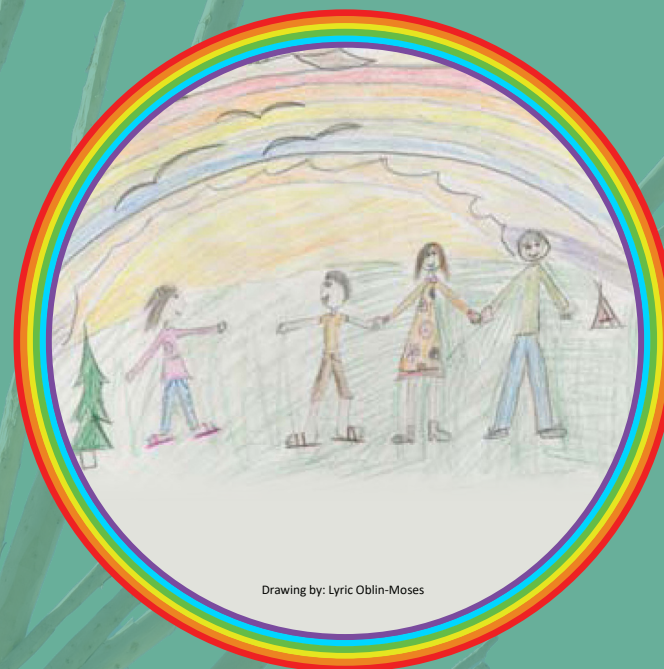
# Orientation, Training and Ongoing Support

All new foster parents will participate in an orientation. Cree Foster Care Resources provides training and support to foster parents in collaboration with Cree Health Board service departments and local entities. Specialized training will be provided to foster parents with special placements. The foster home worker is responsible for providing ongoing support to the foster family.

# CREE FOSTER CARE RESOURCES



## OPEN YOUR HEART



## WOULD YOU LIKE TO BE A FOSTER PARENT?

To learn more about the financial compensation and the process of becoming a foster parent, call or visit your foster home worker.

Community Miyupimaatisiun  
Centre (CMC)

Whapmagoostui 819-929-3467

Chisasibi 819-855-2844

Wemindji 819-978-0225

Eastmain 819-977-2225

Waskaganish 819-895-8833

Nemaska 819-673-2516

Ouje-Bougoumou 418-745-3901

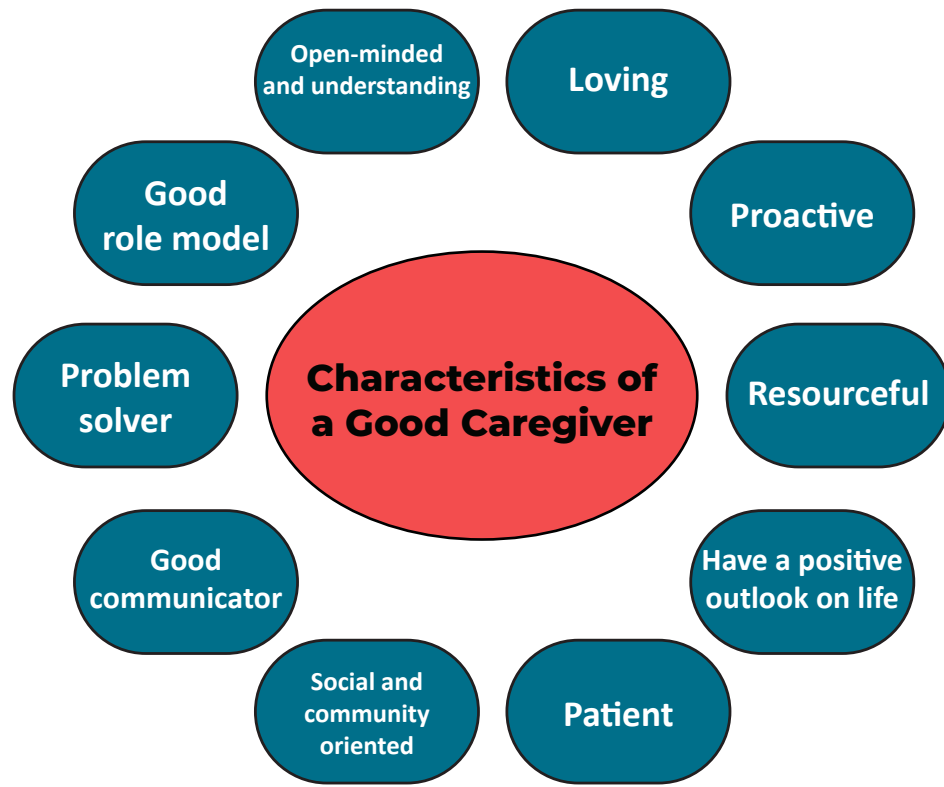
Mistissini 418-923-3376

Waswanipi 819-753-2511



# Traditional Foster Parenting

Caring and supporting for each other has always been part of Cree culture, long before a formal system of foster parenting was in place. Cree people always took care of those in need both out of a strong sense of community and tradition. It is how the Cree Nation has been able to survive over thousands of years. This responsibility is now formalized through the Cree Foster Care Resources Program.



Fostering is challenging work, but offers foster parents a meaningful and rewarding experience.

# Becoming a Foster Family

Cree Health Board's Cree Foster Care Resources Program is designed to provide a safe and secure home environment for all in need of a foster home, for example; children, adults, special needs and mental health clients.

## Types of Foster Care

- Youth Protection
- S-5 placements
- Special Needs
- Mental Health
- Elders
- Respite

## Approval Process

If you are 18 years of age or older, and interested in becoming a foster parent, you will be asked to go through the approval process with the foster home worker in your community.

- Step 1 Criminal Verification Check (CVC)
- Step 2 Medical Reference (Foster Parents)
- Step 3 Safety Check (Home)
- Step 4 Home Assessment

You will be supported by the team at each step.